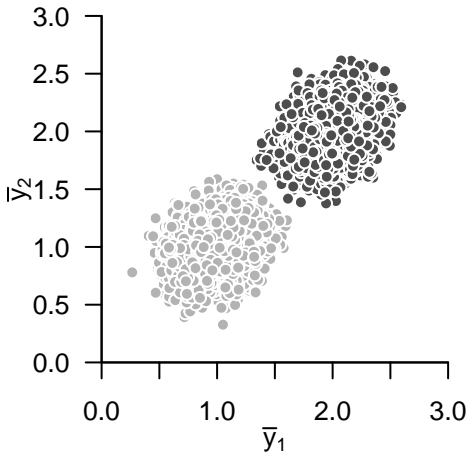
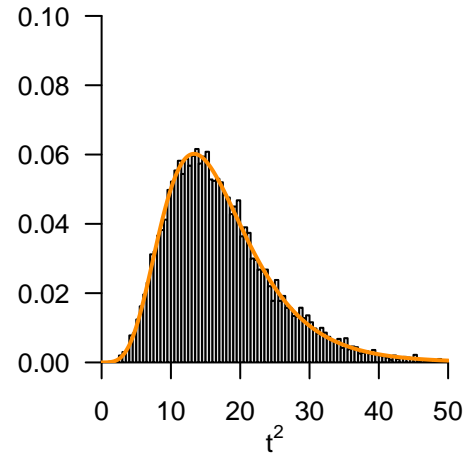


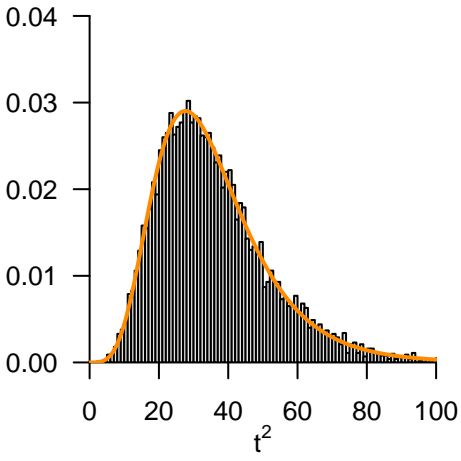
\bar{Y}_1 und \bar{Y}_2 Simulationen



$vT^2 \sim f(\delta, m, n_1 + n_2 - m - 1)$



$p(t^2) := vf(vt^2; \delta, m, n_1 + n_2 - m - 1,)$



$P(t^2) := F(vt^2; \delta, m, n_1 + n_2 - m - 1)$

